

Technical Datasheet

INERTECH™ Gaseous Fire Suppression System



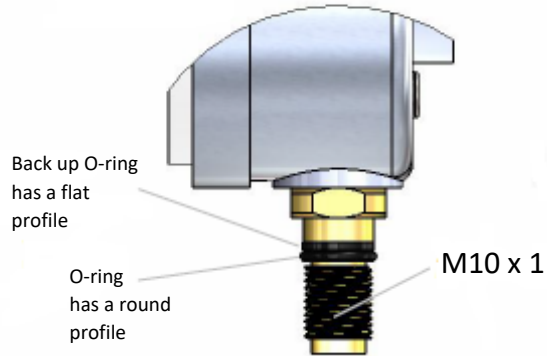
Pressure Gauge 200 Bar - NF385022

The pressure gauge incorporating low pressure switch is connected to the cylinder valve via the M10 x 1 port. When fitting the pressure gauge, screw the unit into the port until it stops (finger tight), if necessary, turn it back to a maximum of one revolution for correct orientation of the gauge dial. Before screwing the gauge into place, check that the 'O'-ring seal and back-up ring are not damaged.

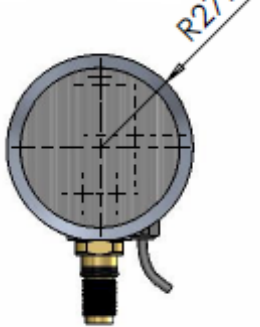
If 'O'-ring replacement is required please note the installation diagram shown here.

It is possible to mount and remove the gauge while the container valve is pressurised.

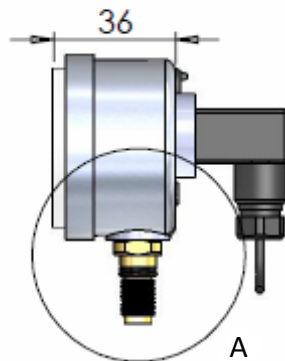
DETAIL A



FRONT VIEW



SIDE VIEW

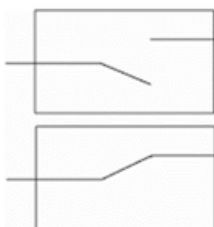


BACK VIEW



Kentec Sigma XT panel

Event	Message	Fault	Alarm
Switch Open	Exting Press Fault	Fault light	Buzzer
Short Circuit A	Low Press I/P Fault	Fault light	Buzzer
Open Circuit B	Low Press I/P Fault	Fault light	Buzzer

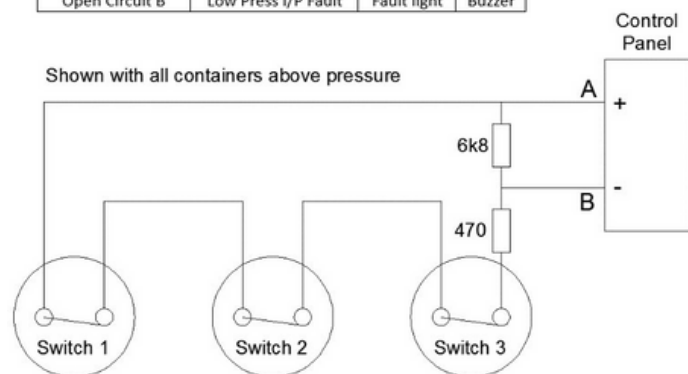


Normally Open when cylinder pressure low (i.e. <180 bar)

Normally Closed when connected to pressurized cylinder

Above 180 bar switch is normally closed (correctly pressurized cylinder 200 bar).

If cylinder pressure drops below 180 bar the switch opens and the circuit is broken. Minimum 180 bar are required to keep switch closed and maintain monitoring circuit



For Kentec Panel:

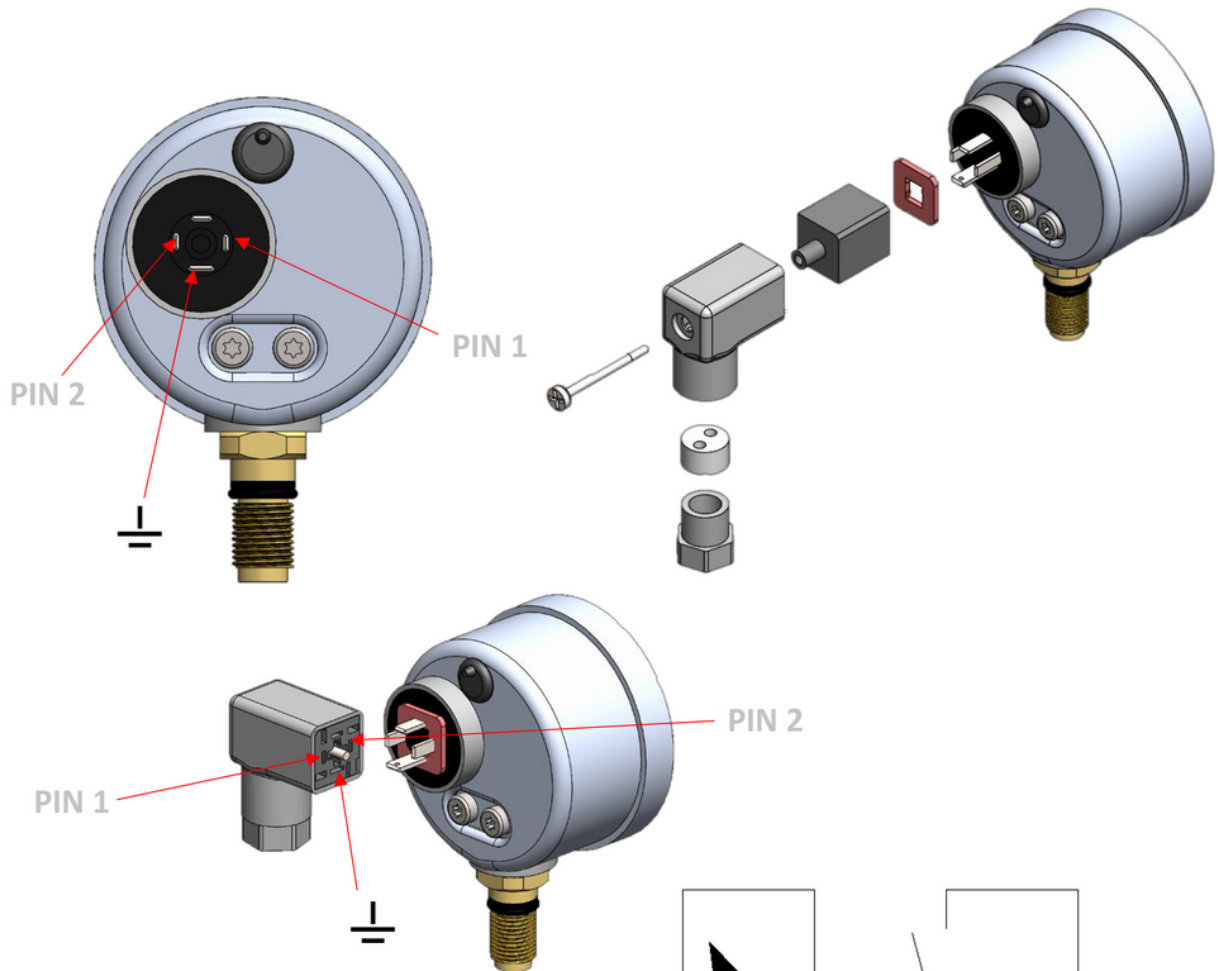
- Low Pressure switch input inverted on panel
- Circuit valid for Sigma XT+ Series 21000 other panels may vary

Technical Datasheet

INERTECH™ Gaseous Fire Suppression System



Pressure Gauge 200 Bar - NF385022



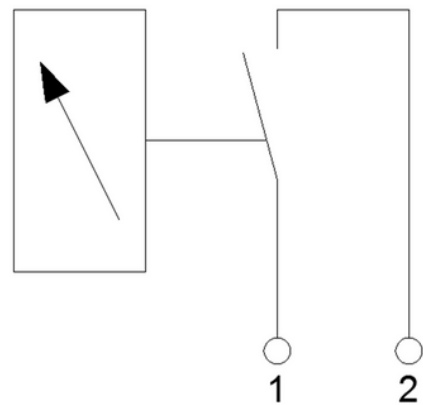
Technical specs:

P range: 0-250 bar

U=4.5-24VDC/VAC

I=5-100mA

P switch = 180bar +/- 0.9bar



Status of switch at minimum scale value
Closed contacts at pressure